



**OHIO's  
QUALITY MANAGEMENT  
ANALYTICAL INFRASTRUCTURE**



# Quality Management Analytical Infrastructure

## **Goal:**

**Develop and implement computerized tools to facilitate the collection, organization, and analysis of 'quality' data, and provide valuable information to all systems users about the needs of individuals and support agencies.**



# Transition to Analytical Infrastructure...

## Current Application Infrastructure

- ✱ Quality data dispersed widely throughout organization
- ✱ Consolidated reporting and analysis very difficult
- ✱ No real ability to interface with external stakeholders via automated avenues

## Proposed Analytical Infrastructure

- ✱ Multiple data sources are consolidated into Quality Data Warehouse
- ✱ All quality data becomes available to all stakeholders
- ✱ Reporting and analysis is much simpler
- ✱ Information is delivered to the right people at the right time



# Primary Sources of Quality Data

- ✦ County Board Data (IIF)
- ✦ Major Unusual Incident (MUI) Reports
- ✦ County Board Accreditation Reviews
- ✦ Supported Living Quality Assurance Reviews
- ✦ Licensed Facility Reviews



# County Board Data (IIF)

- ✦ Primary client tracking tool for Ohio County Boards of MRDD
- ✦ Client demographic information
- ✦ County Board program information
- ✦ County Board subsidy eligibility
- ✦ Behavior support planning data
- ✦ “Umbrella” for all MRDD systems

# Major Unusual Incident Reporting

- ✱ Abuse (Physical, Verbal, Sexual)
- ✱ Neglect
- ✱ Theft
- ✱ Death
- ✱ Missing Person
- ✱ Medical Emergency
- ✱ Unplanned Hospital
- ✱ Suspicious/Serious Injury
- ✱ Rights Code Violations
- ✱ Series of Unusual Incidents
- ✱ Behavior Support
- ✱ Relocation
- ✱ Attempted Suicide
- ✱ Law Enforcement



# County Board Accreditation Reviews

- ☀ Standards defined in statute and rule
- ☀ Data collection facility for review data organized by standard
- ☀ Process tracking of reviews for each county
- ☀ Preliminary and final accreditation reports and Plans of correction



# Supported Living Quality Assurance Reviews

- ✦ New quality framework will be followed
- ✦ Data collection facility for review data organized by domain
- ✦ Assesses the quality of services an individual receives from providers





# Licensed Facility Reviews

- ☀ Does the facility provide needed services
  - ☀ Does the facility ensure individuals are free from abuse/neglect
  - ☀ Are individuals, family members, guardians and advocates active and involved in identify and planning services
- Does the facility promote independence, choice and responsibility
- ☀ Are staff competent and effective in their work
  - ☀ Are health needs of individuals appropriately monitored and addressed



# Comprehensive Assessment and Review Tool (CART)

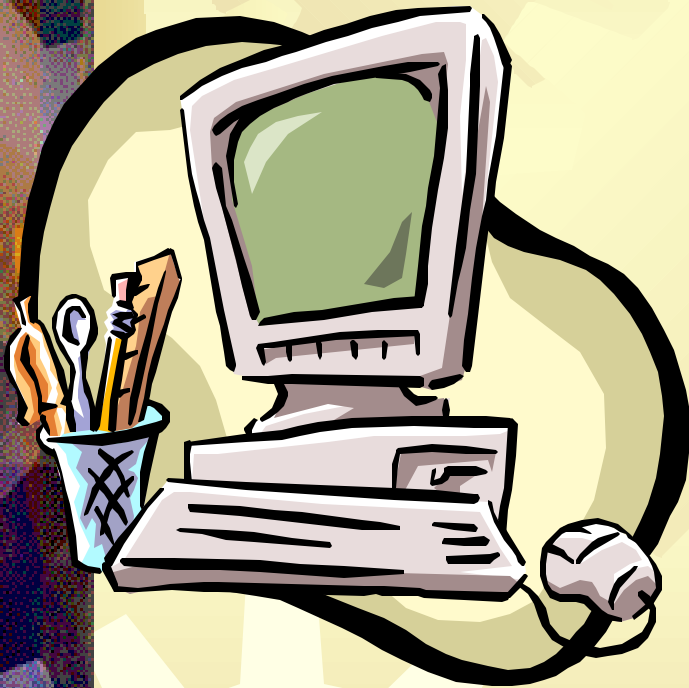
- ☀ Generic review tool based upon Quality Framework
- ☀ Used for Accreditation, Provider Compliance, Individual QA, and Licensed Facility Reviews
- ☀ Review data will be reorganized for Quality Reporting and Analysis



# Additional Data Sources

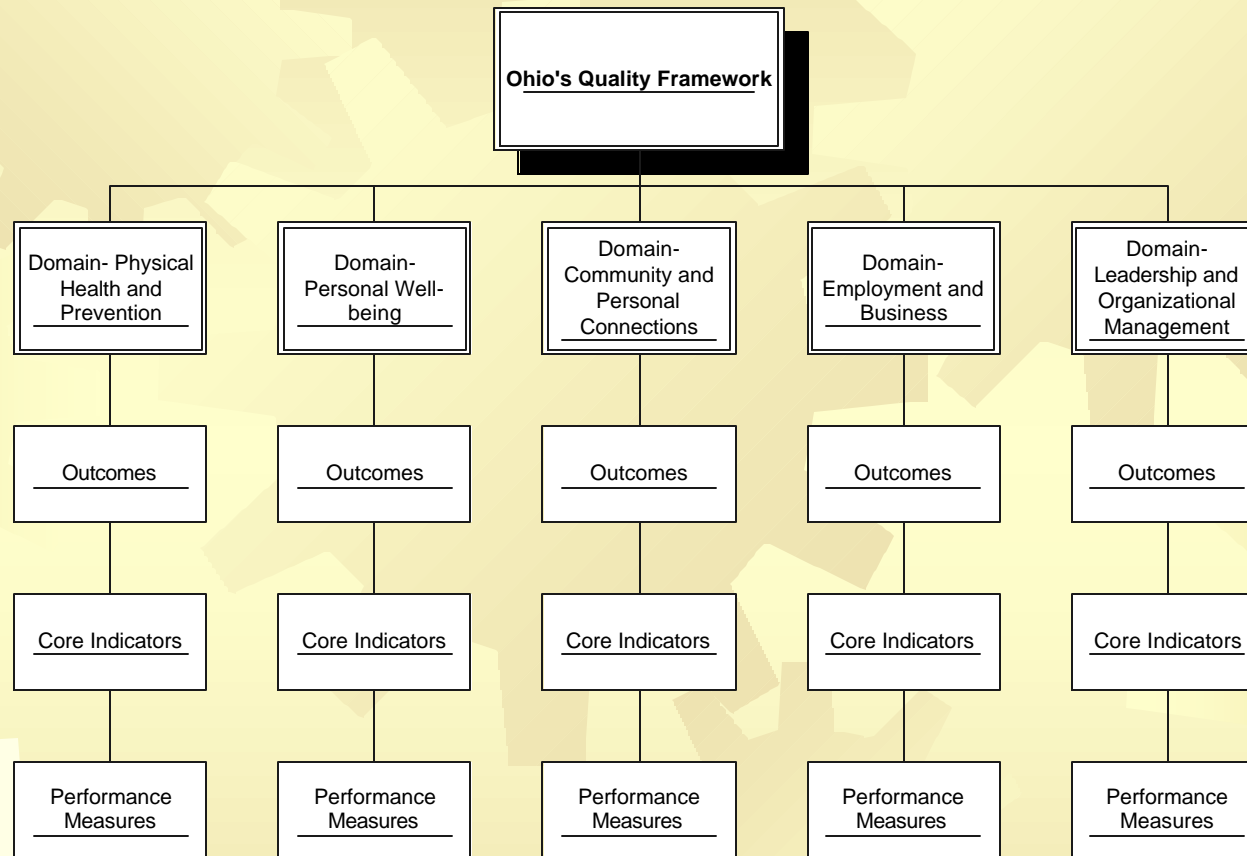
- ✦ Provider Certification System
- ✦ Developmental Center Information Management System
- ✦ Personal Encounters Datasheets
- ✦ Constituent Communication Tracking
- ✦ Medication Administration System
- ✦ Developmental Disability Profiles

# Building the Infrastructure

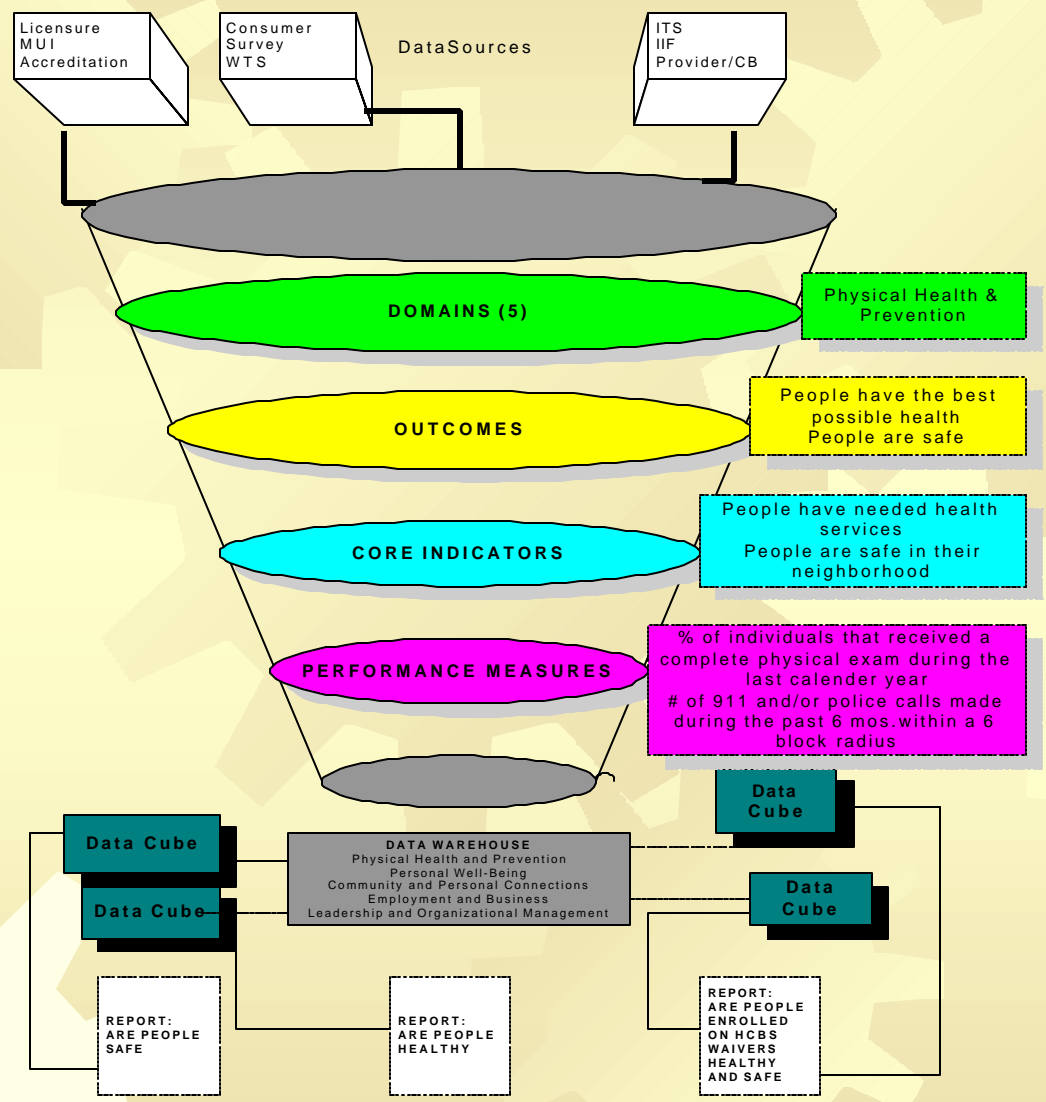


- ✦ Assess technology needs (for the future)
- ✦ Construct the data model
- ✦ Purchase/install hardware
- ✦ Purchase/develop software
- ✦ Testing
- ✦ Implementation

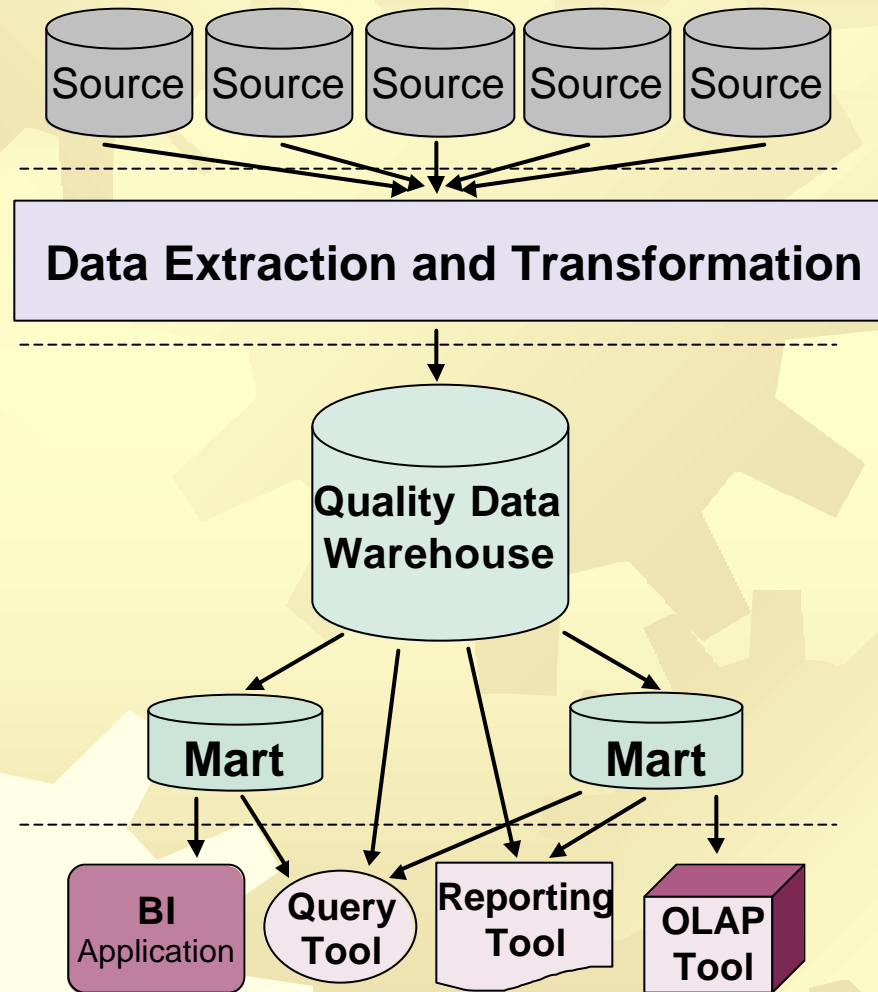
# Ohio Department of Mental Retardation and Developmental Disabilities



August 2005, QF version 3.6



# Analytical Infrastructure



The background features a light yellow-to-gold gradient with several large, semi-transparent gear shapes scattered across it. On the left side, there is a vertical strip containing a dense, colorful pattern of smaller gears in various colors like red, purple, blue, and orange.

Questions????





**For Additional Information and/or Assistance  
Contact:**

**Don Bashaw, Assistant Deputy Director  
Ohio Department of Mental Retardation &  
Developmental Disabilities (ODMRDD)**

**Office of Quality Management,**

**Planning and Analysis**

**1810 Sullivant Avenue**

**Columbus, OH 43223**

**614-728-2524**

**[don.bashaw@dmr.state.oh.us](mailto:don.bashaw@dmr.state.oh.us)**