

# HCBS Self-Directed Care Stakeholder Focus Group Project


Funded by the HCBS Resource Network  
Conducted by the Wichita State University  
Self-Help Network  
Center for Community Support and Research



*That all Kansans  
have a voice and  
share their talents  
and experiences to  
create thriving,  
supportive  
communities.*



Center for Community Support and Research

- 
- ❑ **Those who self-direct in unlicensed settings using**
    - MR/DD Waiver
    - PD Waiver
    - HI Waiver
    - FE Waiver
  - ❑ **Six Regions in Kansas**
  - ❑ **End-In-Mind**
    - How to look for quality care in my home?
    - What is my role in monitoring care?
  - ❑ **Methods**
    - Combined waiver groups
    - Recruitment
    - Small groups
    - Non-service setting
    - Assurances
    - Asked to “change hats”
    - Payment
    - Data management



□ **Assurances**

- Facilitators did not work for SRS or KDOA
- No discussion of their personal plans
- Won't change personal plan or services
- Will not ask about satisfaction with their services
- No audio or video recording
- Names not used in report
- Data not tied to specific communities
- They can have a copy of the report

□ **Changing Hats**

- Fun environment
- Pop-up questions
- Visual cues
- Use of role playing



□ **Focus Areas**

- Introductions and interactions when visiting someone who self-directs
- Health and Safety (Welfare) issues
- Satisfaction and accountability
- Individual Responsibility

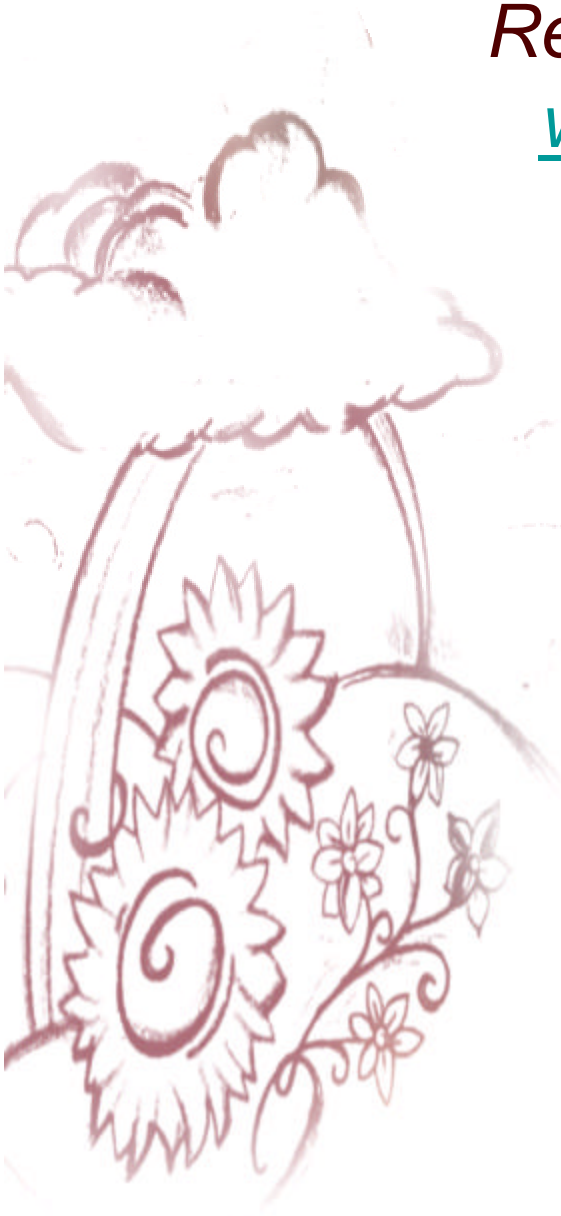


Center for Community Support and Research

[www.selfhelpnetwork.wichita.edu](http://www.selfhelpnetwork.wichita.edu)

Report reprints at

[www.hcbs.org](http://www.hcbs.org)



*Never doubt that a small group  
of thoughtful committed citizens  
can change the world. Indeed,  
it is the only thing that ever has.*

*-Margaret Mead*